







# BANQUET ROOM INFORMATION

## 연회장 시설 안내

Name of Room	 Banquet Round	 Theater Style	 Classroom	 Cocktail Reception	 U-shape	 Floor
CRYSTAL BALLROOM	250	350	144	300	50	The Hotel 1F
BOARD ROOM	-	-	-	-	13	The Hotel 2F
NAMSAN TERRACE	150	-	-	200	-	The Hotel 3F
CELESTE	80	-	-	100	-	The Hotel 3F
FESTA HALL	100	100	72	100	35	The Festa 2F
OASIS	350	-	-	-	-	Outdoor

\* 상기 인원은 최대 수용 가능 인원이며 행사 성격 및 레이아웃 형태에 따라 달라질 수 있습니다.

\* The numbers above are the maximum capacity and may vary depending on the event purpose and layout.

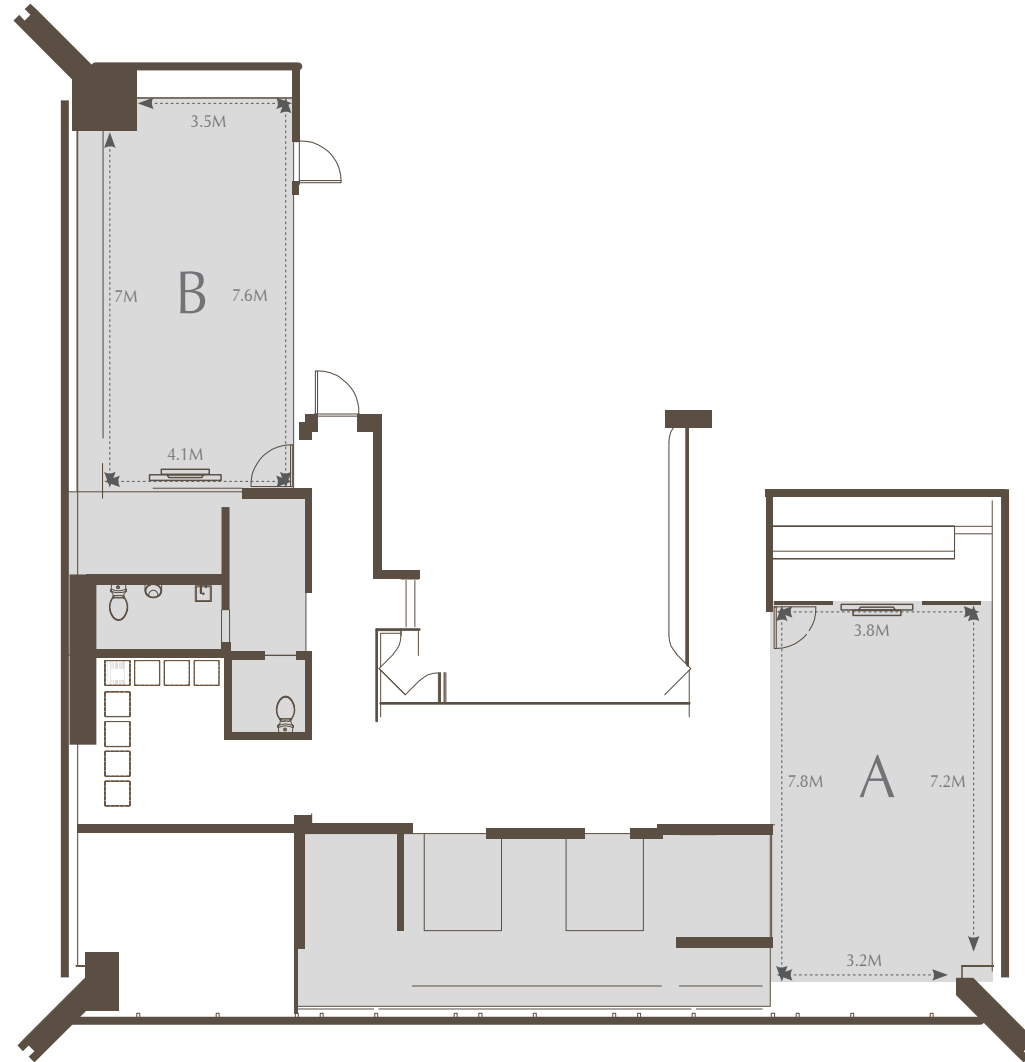
# The Hotel - Crystal Ballroom 1F

		Crystal Ballroom	Crystal Ballroom I	Crystal Ballroom II
Space (Sq.M)		490	250	160
Height (M)	Ceiling Decoration	3.4 - 3.9		
	Ceiling	5.2		
Capacity	Banquet Round	250	100	90
	Classroom	144	100	90
	Reception	300	200	100



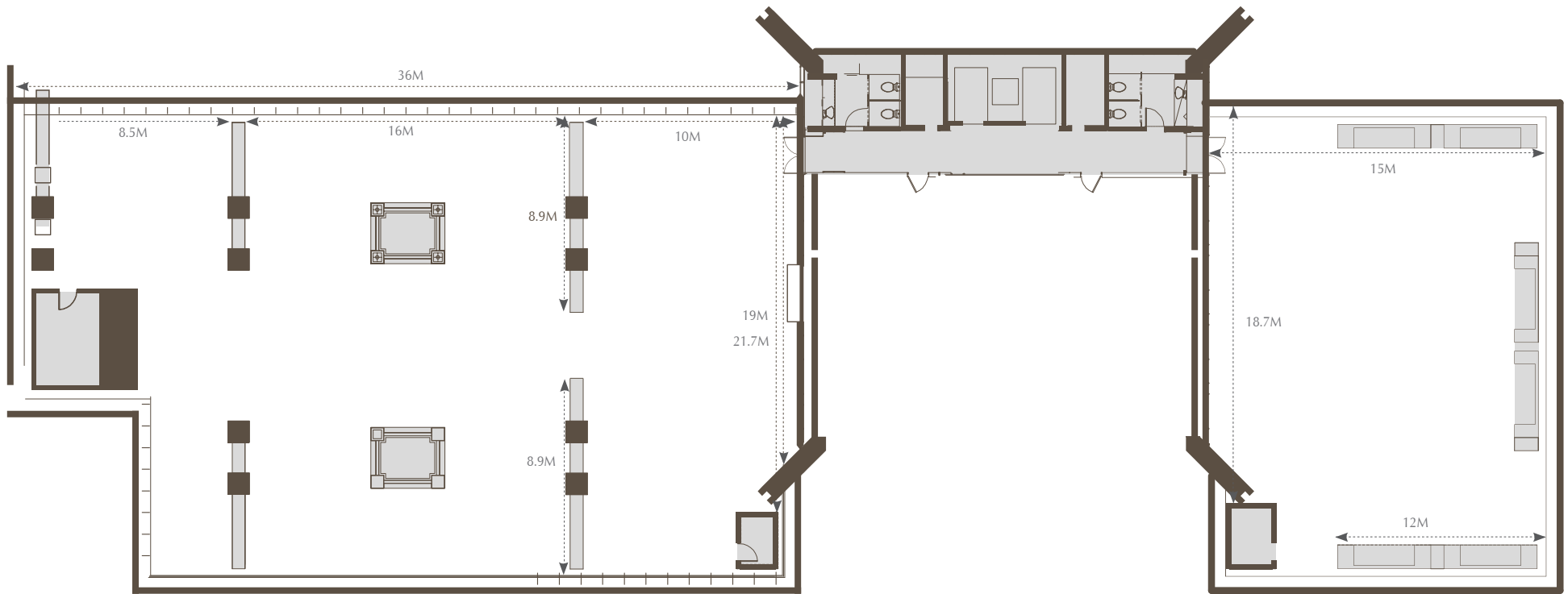
# The Hotel - Boardroom 2F

	Boardroom A	Boardroom B
Space (Sq.M)	34	30
Capacity	13	13



# The Hotel 3F

		Namsan Terrace	Celeste
Space (Sq.M)		780	303
Capacity	Banquet Round	150	80
	Reception	200	100

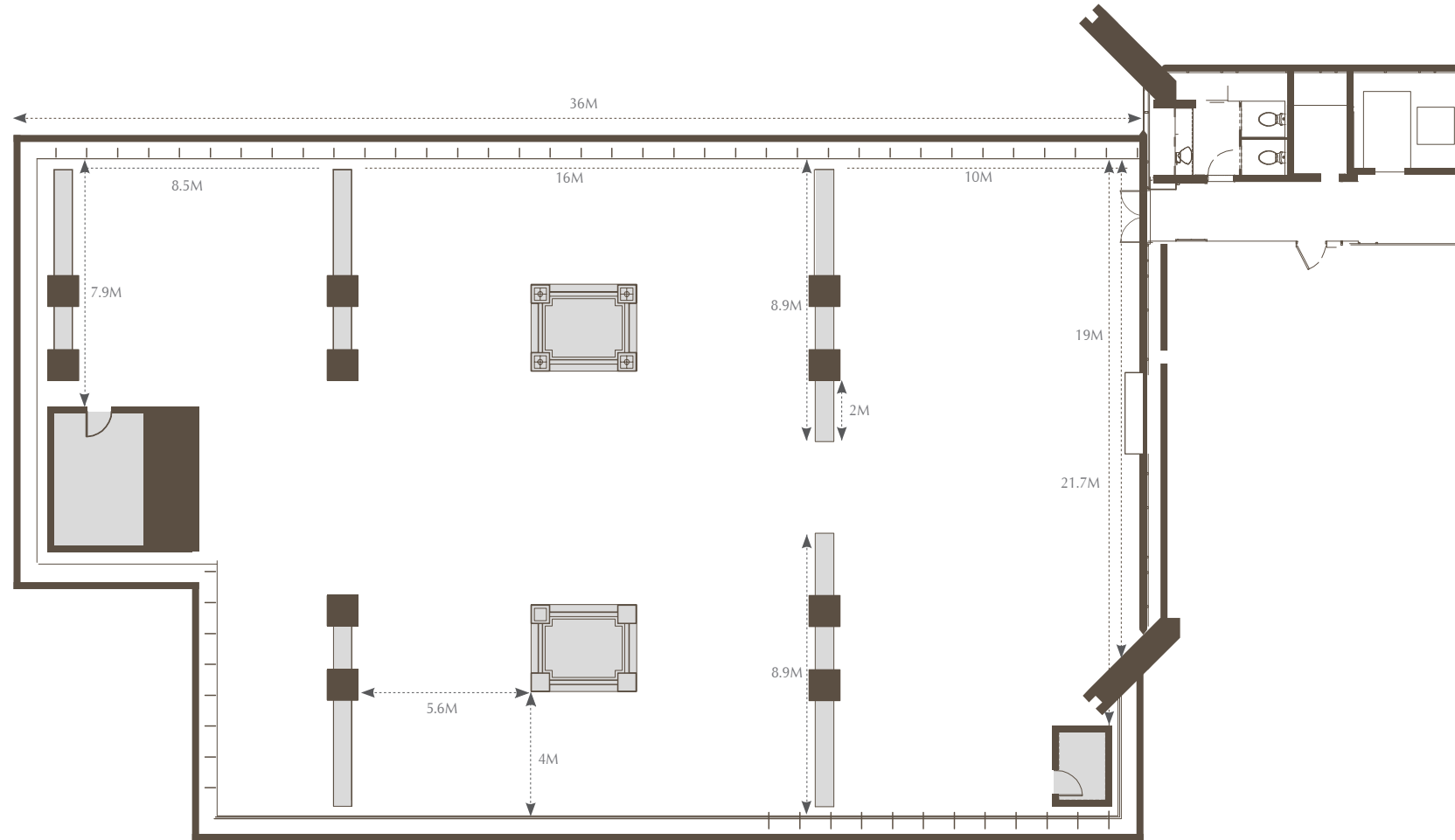


Namsan Terrace

Celeste

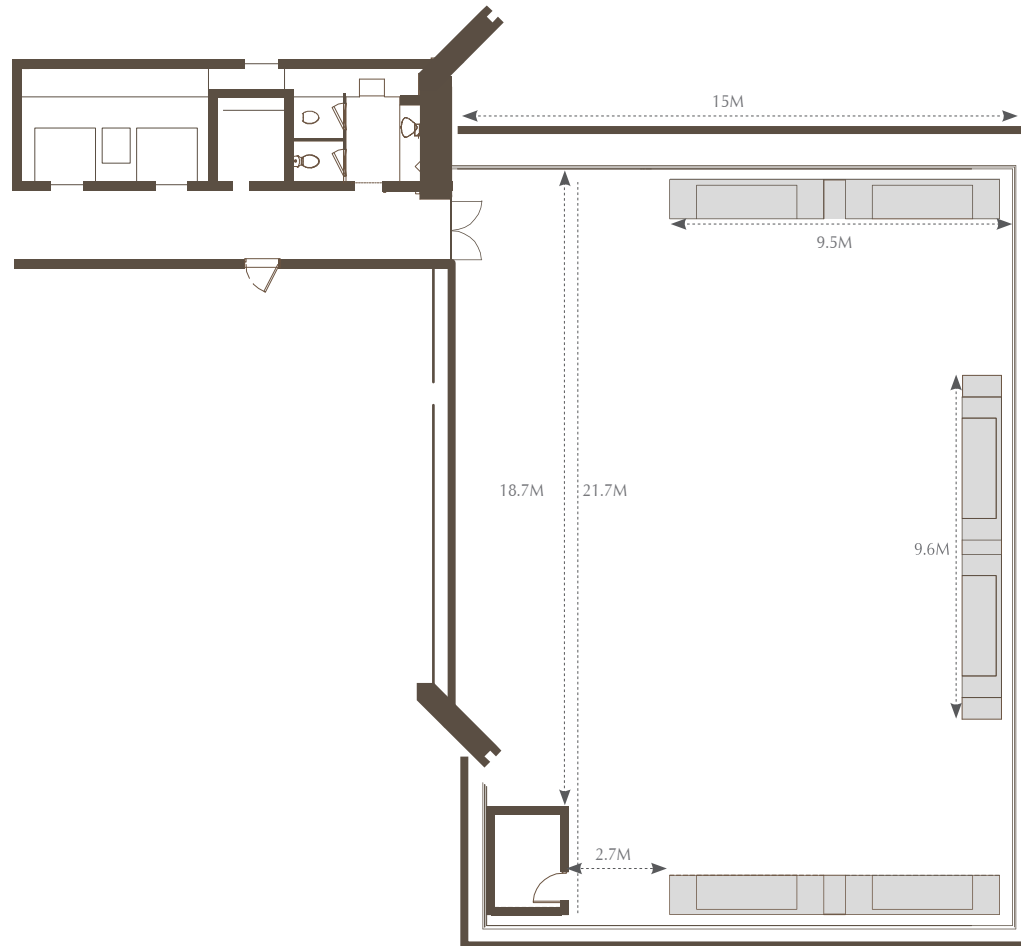
# The Hotel - Namsan Terrace 3F

Namsan Terrace	Space (Sq.M)	Capacity	
		Banquet Round	Reception
	780	150	200



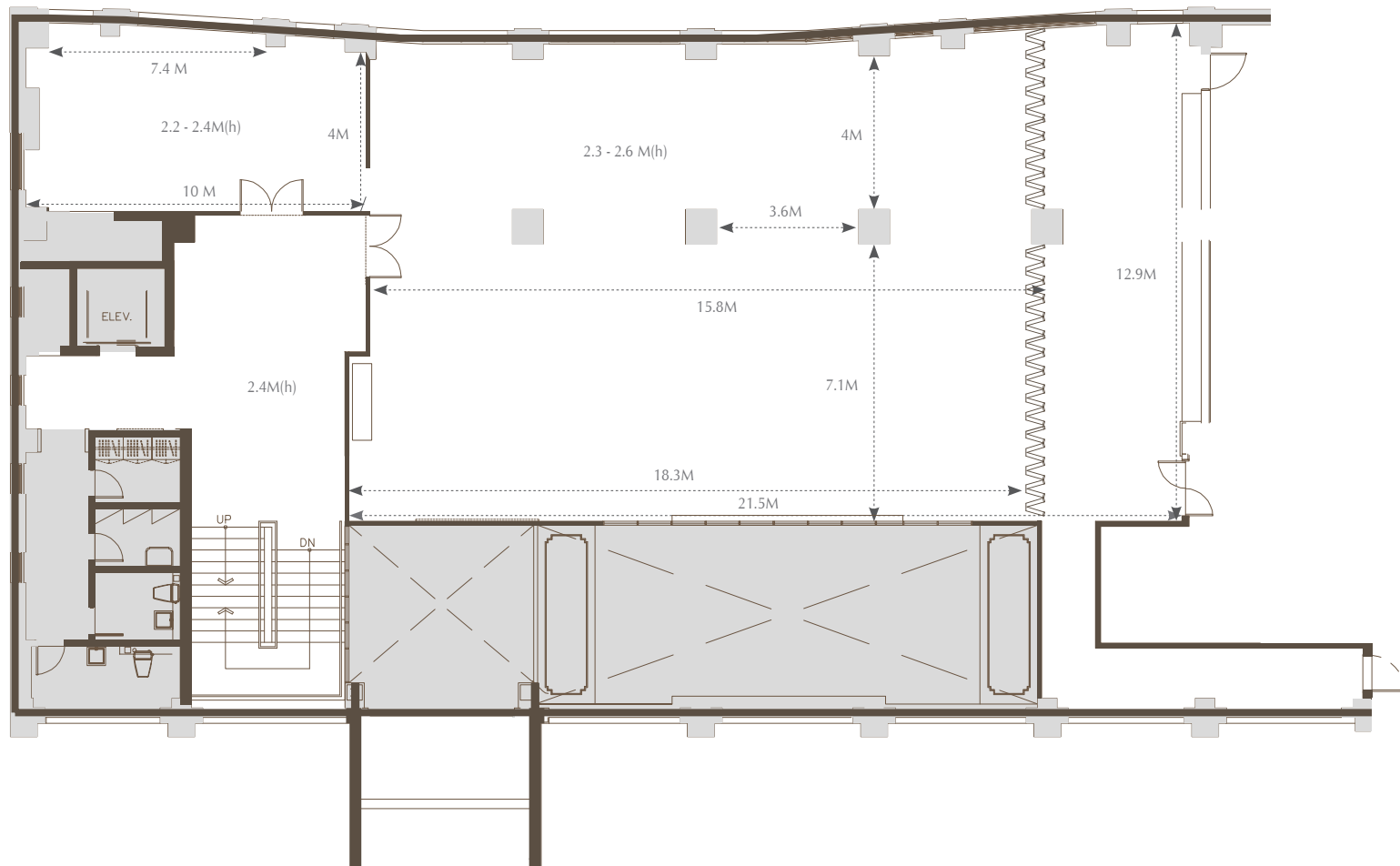
# The Hotel - Celeste 3F

Celeste	Space (Sq.M)	Capacity	
		Banquet Round	Reception
	303	80	100



# The Festa - FESTA HALL 2F

		Festa Hall 2 F
Space (Sq.M)		225.7
Height (M)		2.3 - 2.6
Capacity	Banquet Round	100
	Classroom	72
	Reception	100

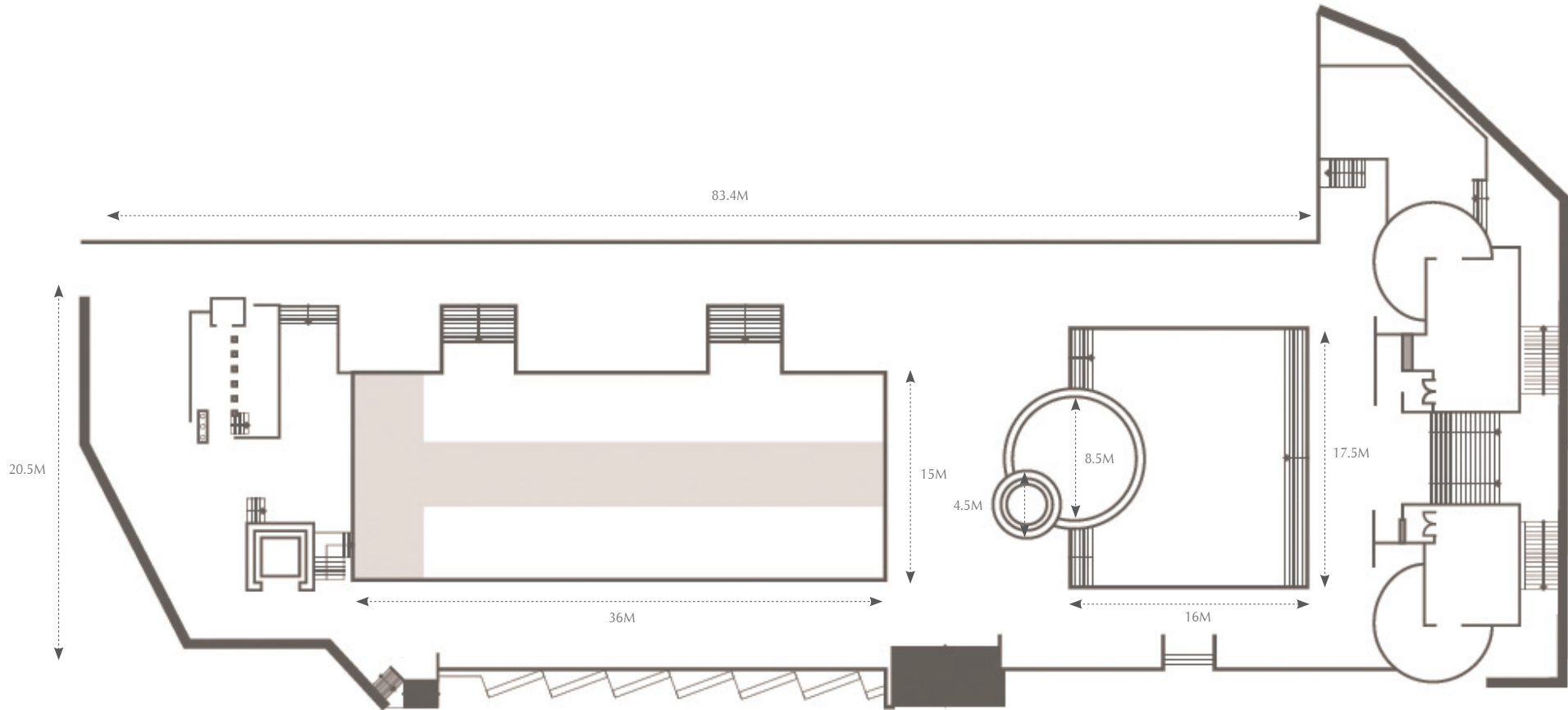


# The Oasis

Capacity

Banquet Round

350





# The Festa - FESTA Rooftop Bar 3F

Capacity

72

